



INTEQ

Company : Overseas Energy Holdings Ltd

Well : Westwood 1

Interval : -8.00 - 1346.04 meters

Created : 23/Dec/2009 3:32:28 PM



DRILLING DATA PLOT

ROP

200 | 150 | 100 | 50  
m/hr

ROP Backup

400 | 350 | 300 | 250

MD meters 1:500

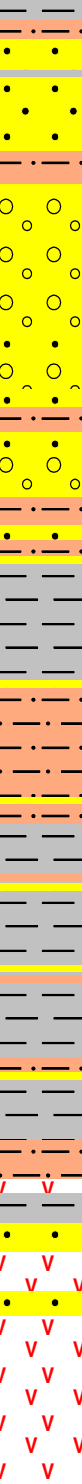
WOB Avg

10 | 20 | 30 | 40 | 50  
klbf

INTERPRETED  
LITHOLOGY

Spaulding Rig drilled  
203mm(8") pilot hole to 112m  
with Air

MW: 8.7ppg (1.04sg) FV: 36  
PV: 5 GELS: 7/9 NACL: 2-3%



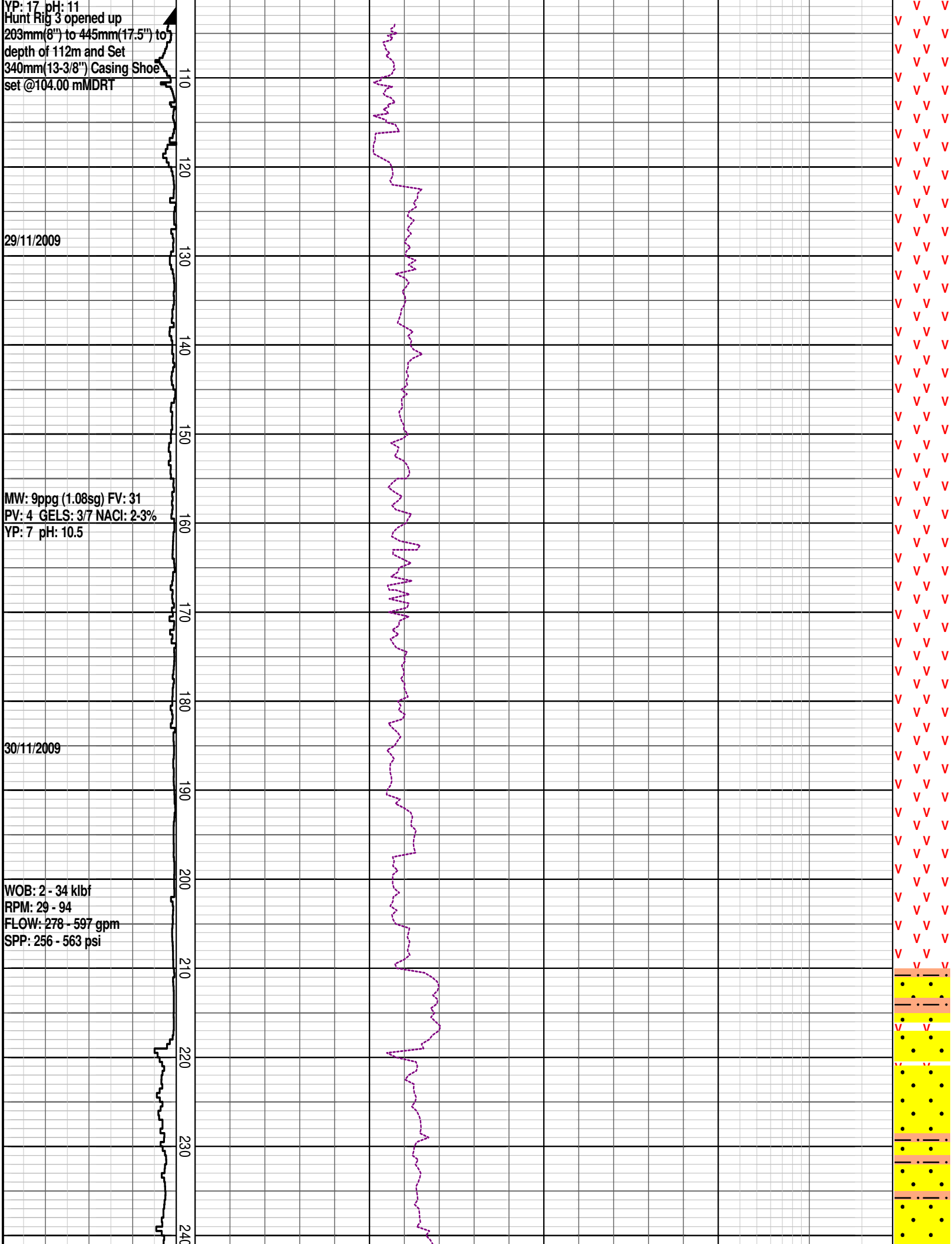
YP: 17 pH: 11  
Hunt Rig 3 opened up  
203mm(8") to 445mm(17.5") to  
depth of 112m and Set  
340mm(13-3/8") Casing Shoe  
set @104.00 mMDRT

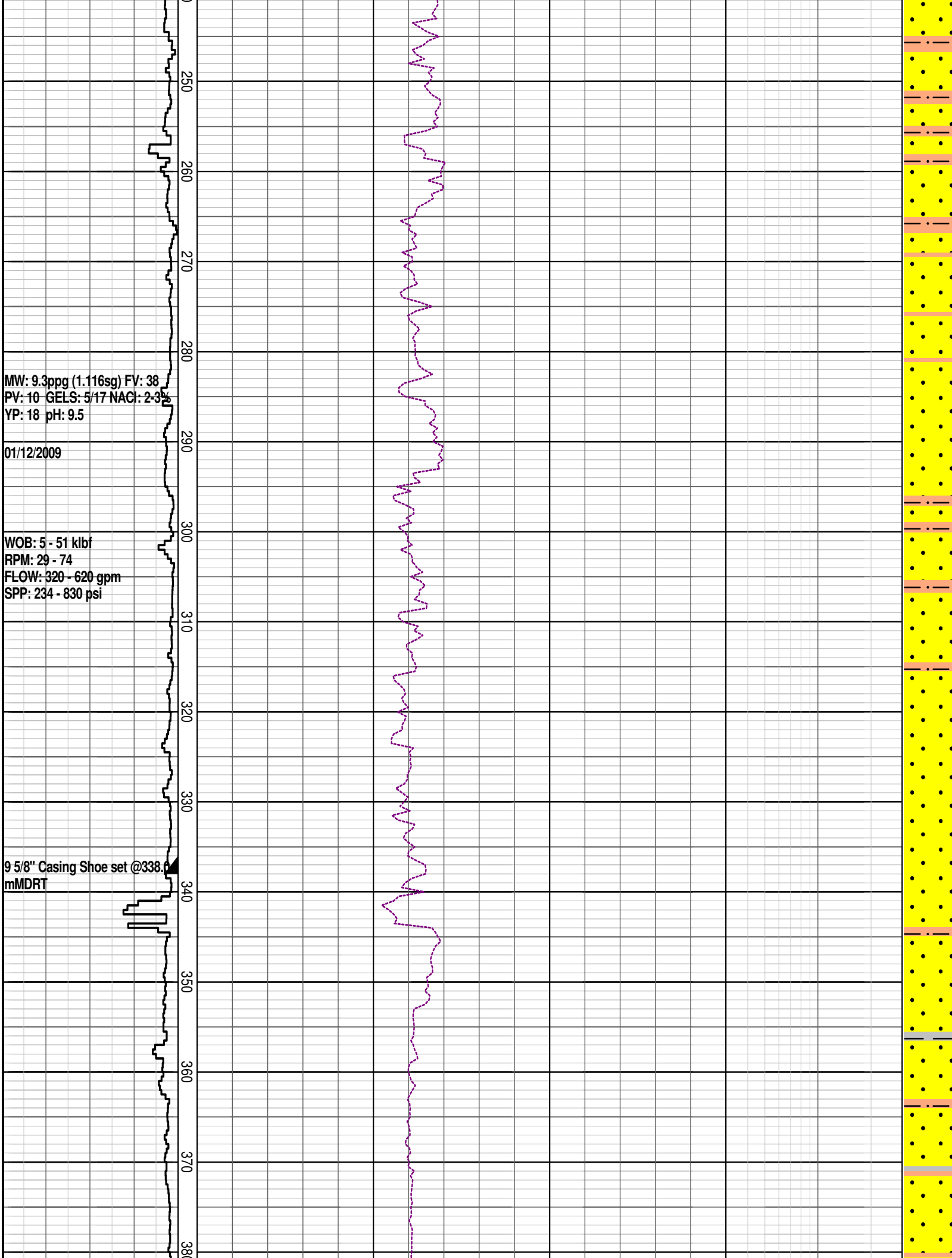
29/11/2009

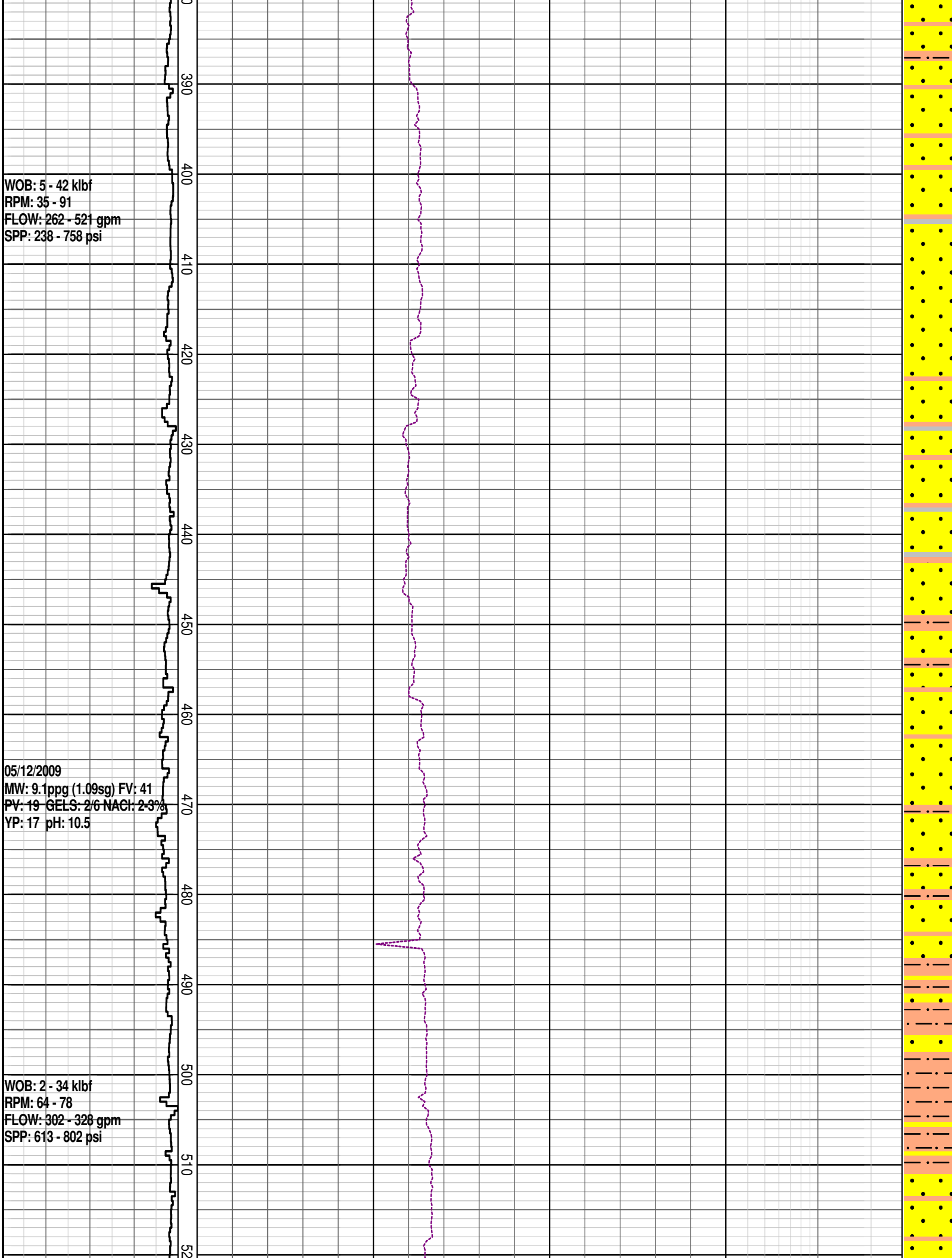
MW: 9ppg (1.08sg) FV: 31  
PV: 4 GELS: 3/7 NACl: 2-3%  
YP: 7 pH: 10.5

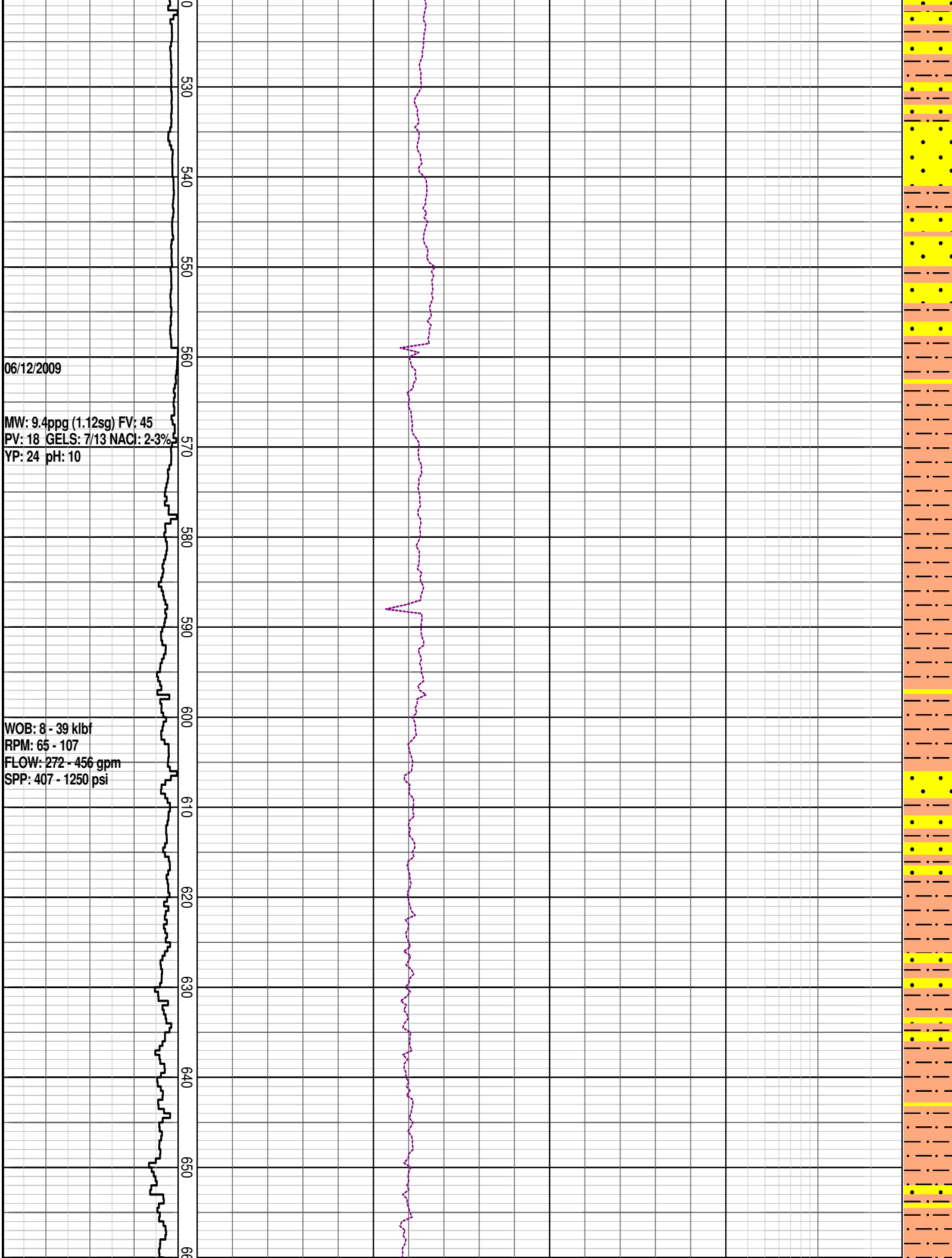
30/11/2009

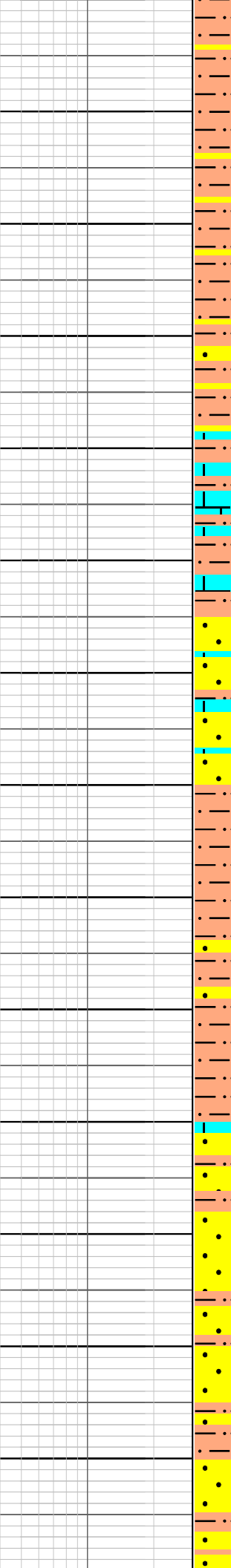
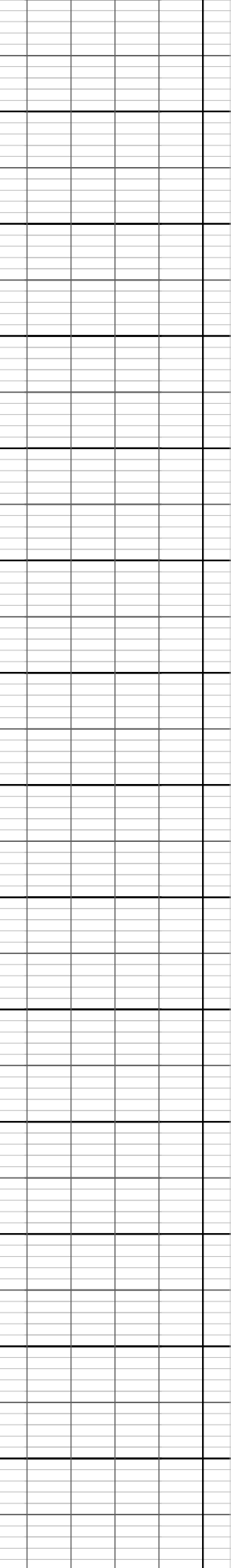
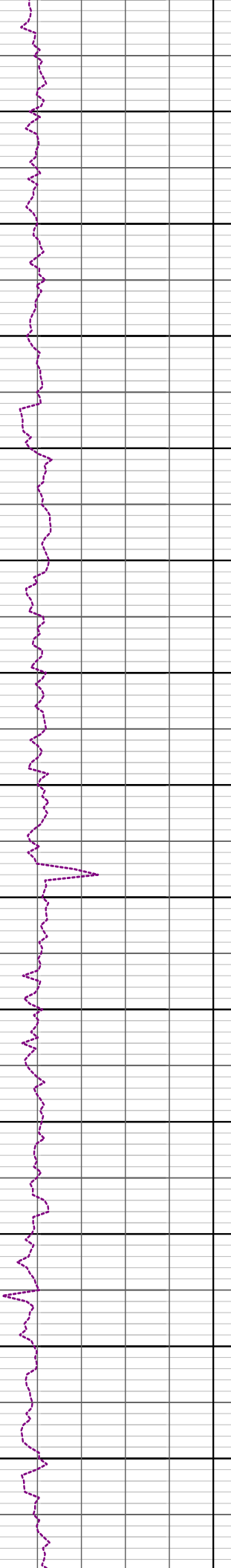
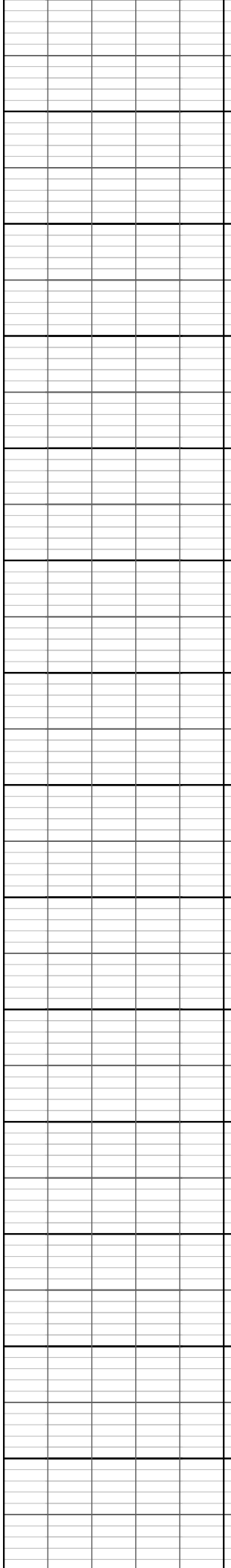
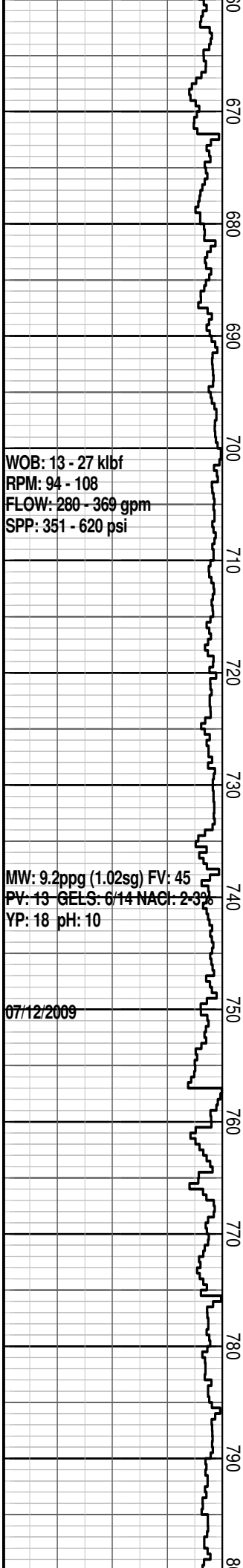
WOB: 2 - 34 klbf  
RPM: 29 - 94  
FLOW: 278 - 597 gpm  
SPP: 256 - 563 psi









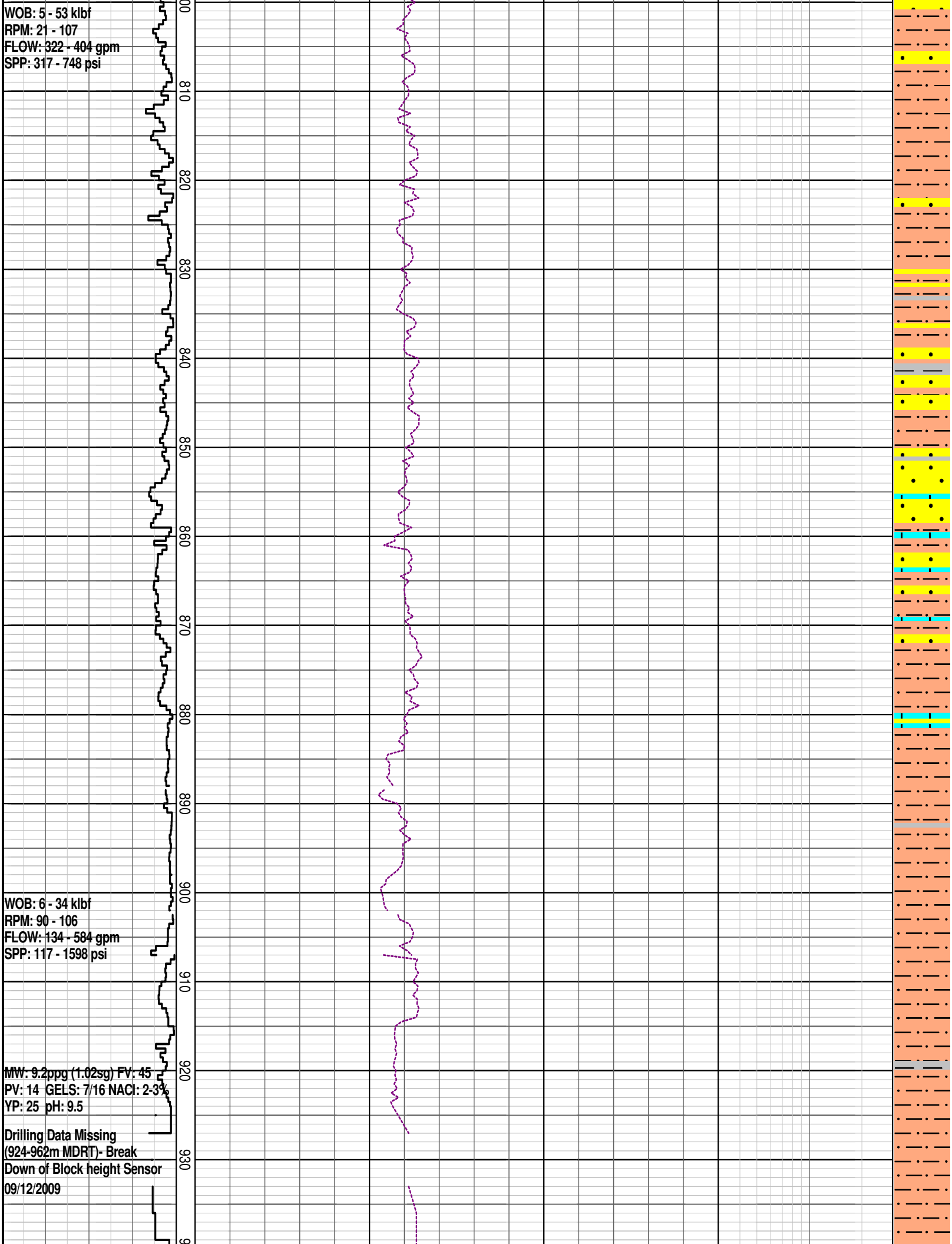


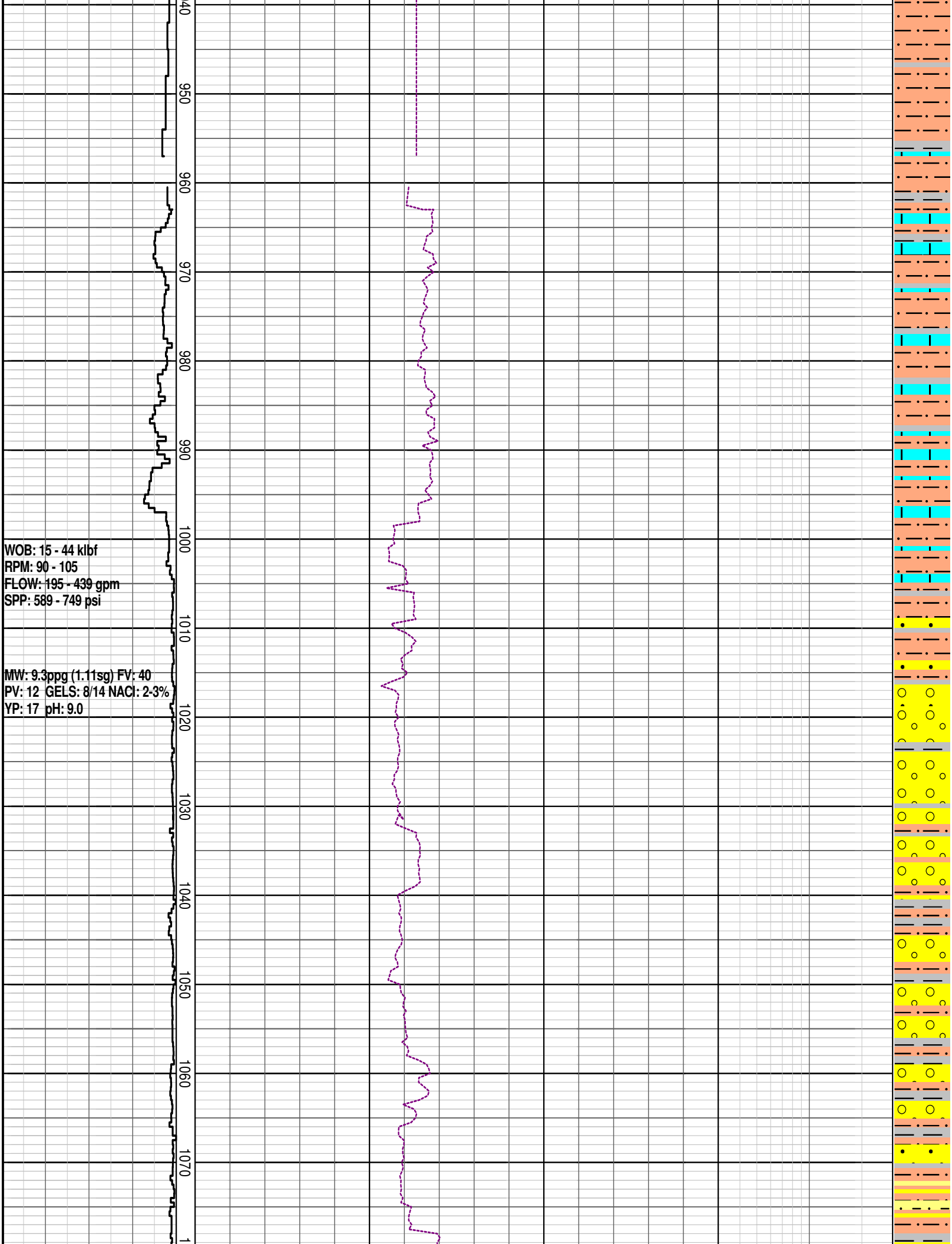
WOB: 5 - 53 klbf  
RPM: 21 - 107  
FLOW: 322 - 404 gpm  
SPP: 317 - 748 psi

WOB: 6 - 34 klbf  
RPM: 90 - 106  
FLOW: 134 - 584 gpm  
SPP: 117 - 1598 psi

MW: 9.2ppg (1.02sg) FV: 45  
PV: 14 GELS: 7/16 NACI: 2-3%  
YP: 25 pH: 9.5

Drilling Data Missing  
(924-962m MDRT)- Break  
Down of Block height Sensor  
09/12/2009





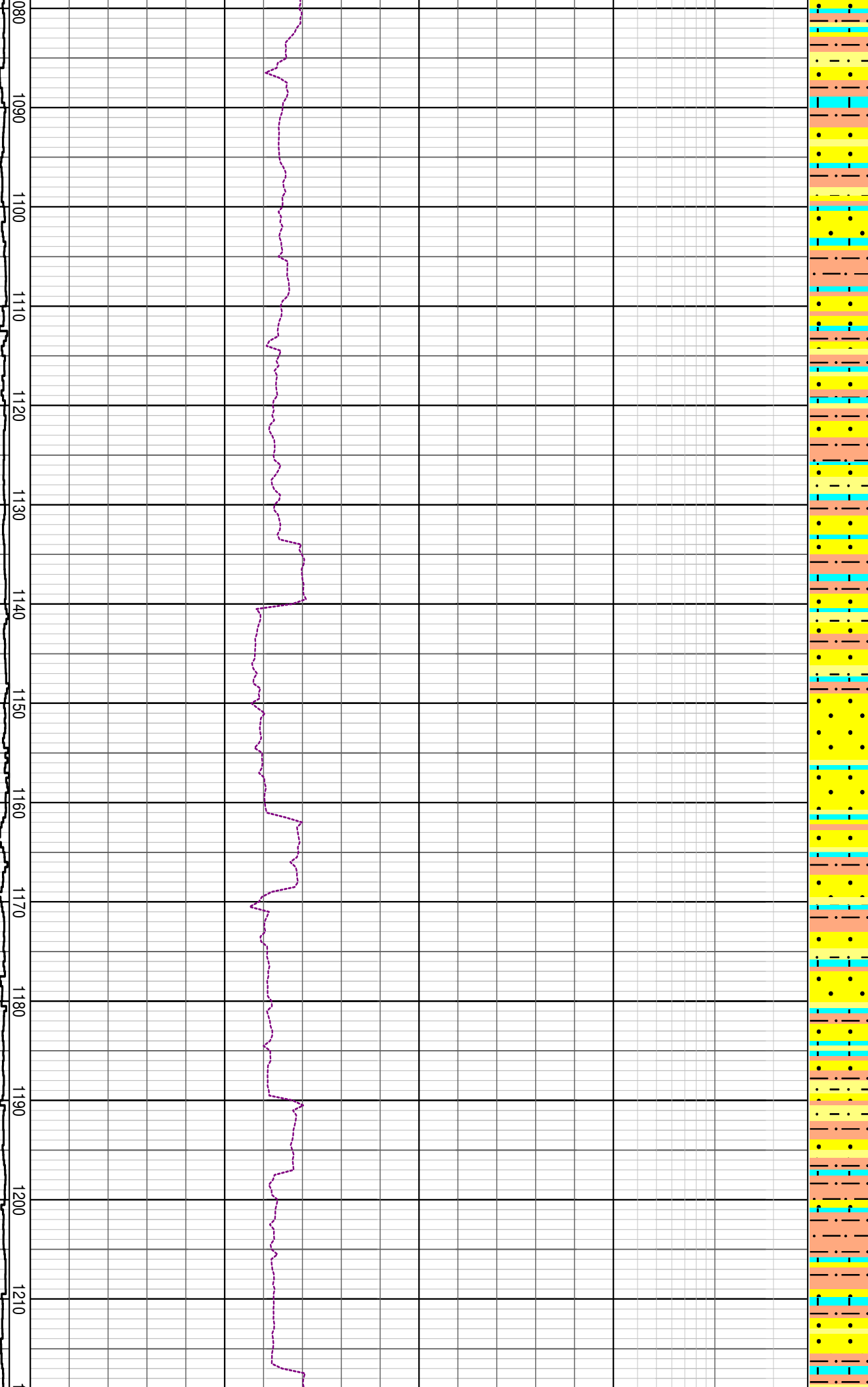


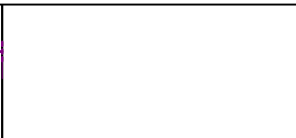
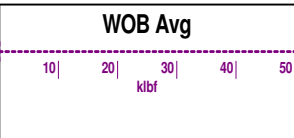
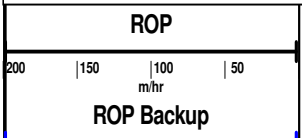
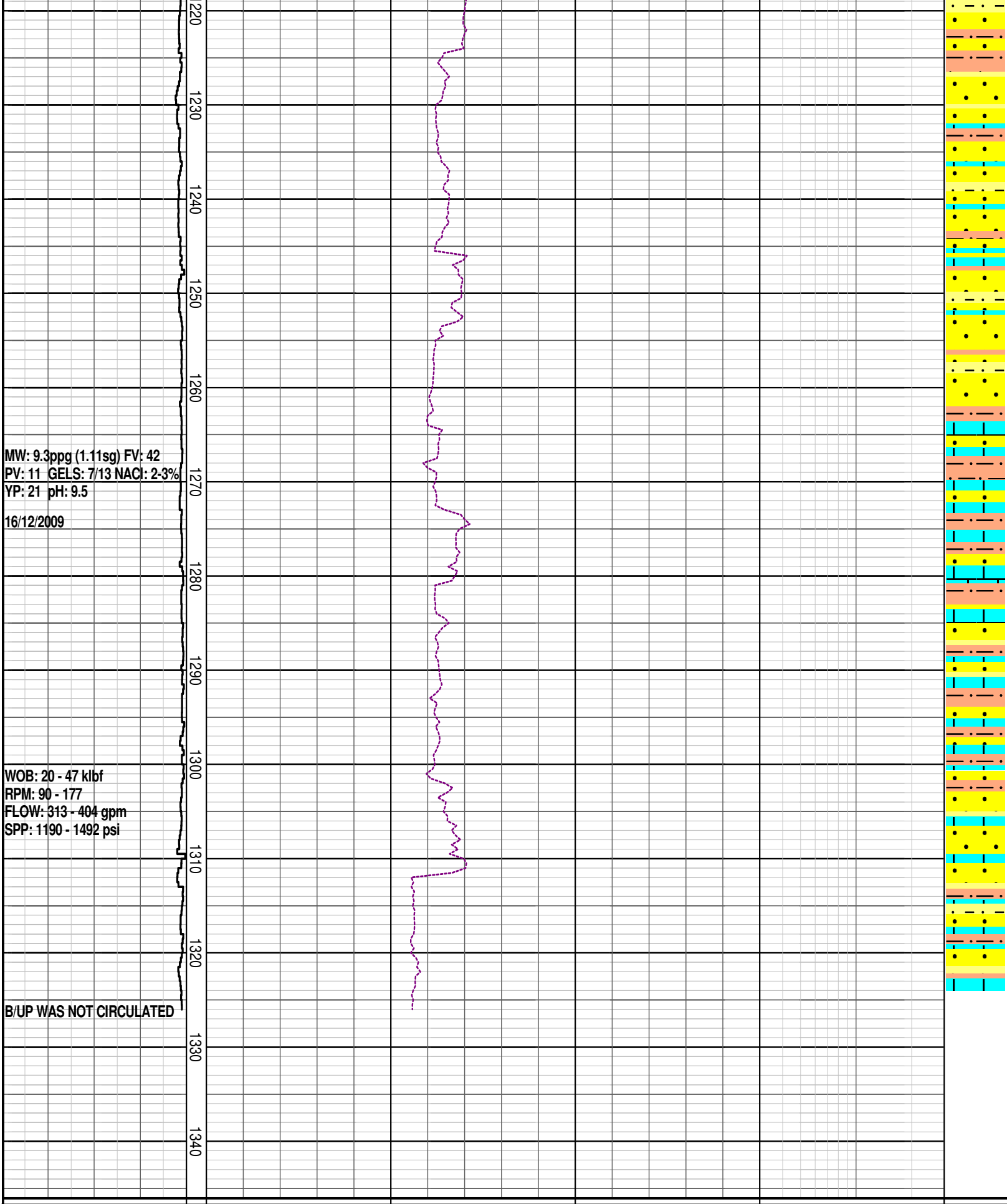
MW: 9.3ppg (1.11sg) FV: 45  
PV: 10 GELS: 4/8 NACL: 2-3%  
YP: 10 pH: 8.5

14/12/2009

WOB: 8 - 45 klb  
RPM: 24 - 236  
FLOW: 215 - 400 gpm  
SPP: 691 - 1347 psi

WOB: 14 - 46 klb  
RPM: 37 - 186  
FLOW: 305 - 413 gpm  
SPP: 1061 - 1379 psi  
15/12/2009





400	350	300	250	1:500					ED
-----	-----	-----	-----	-------	--	--	--	--	----